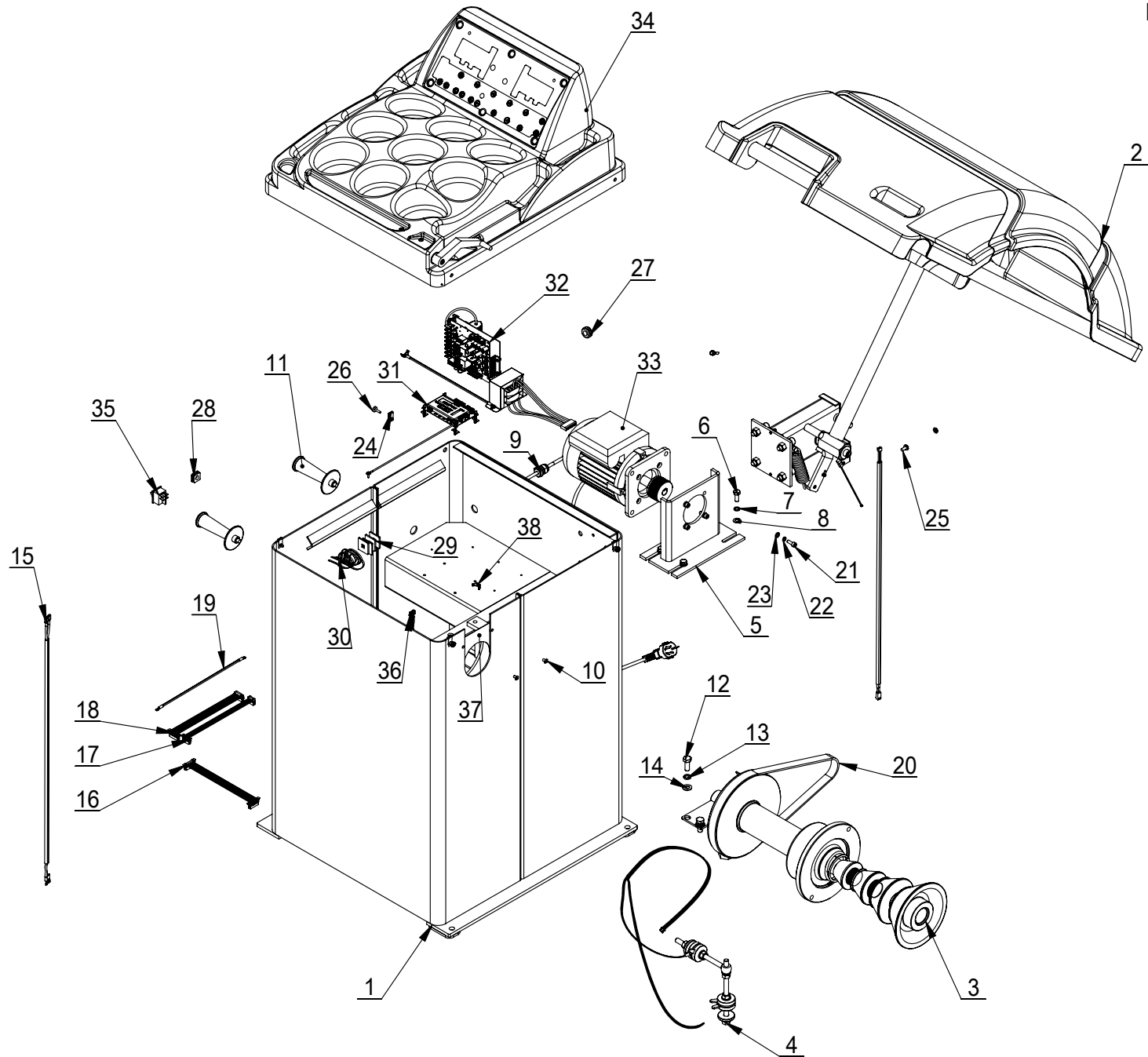
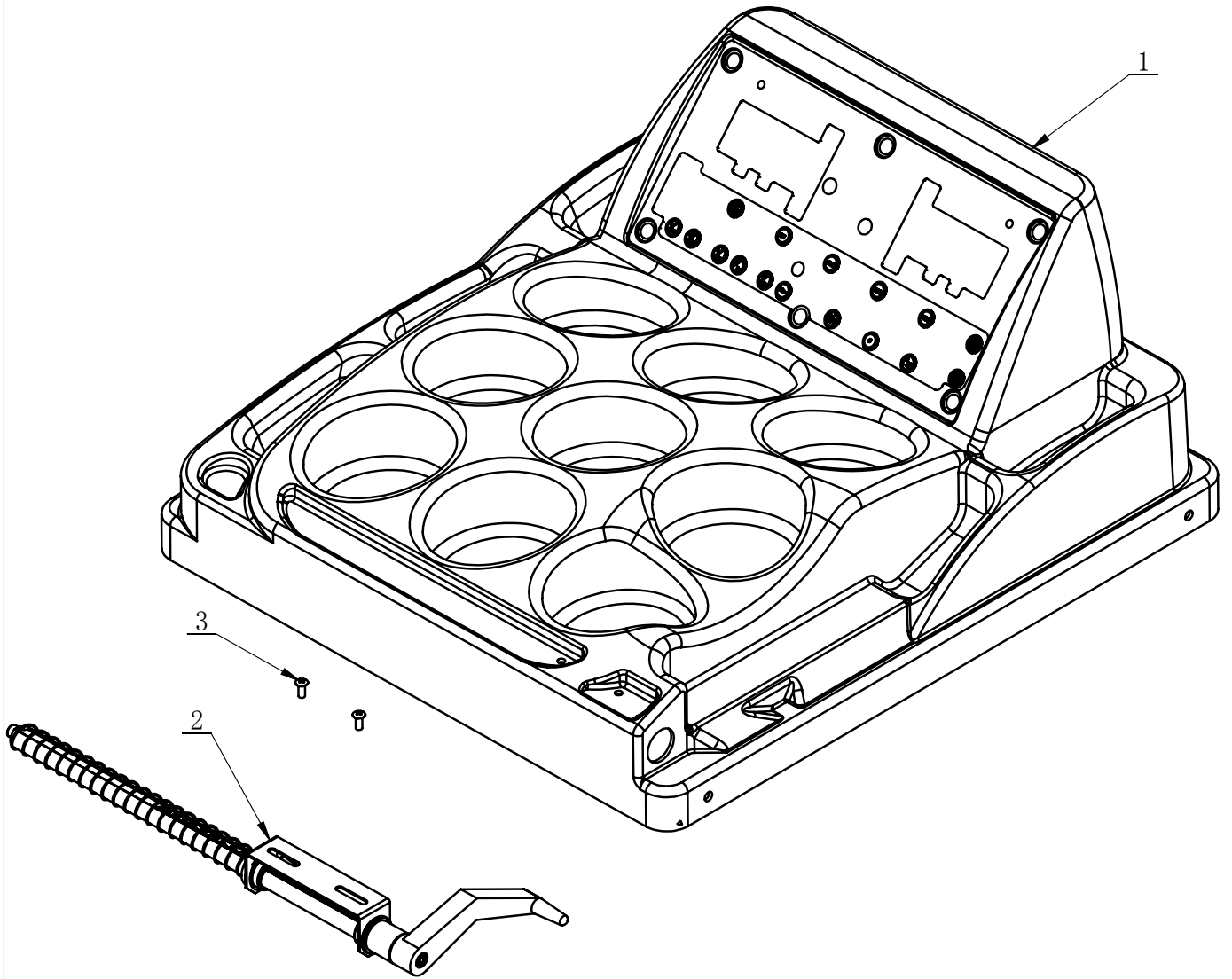


REVISION A-01

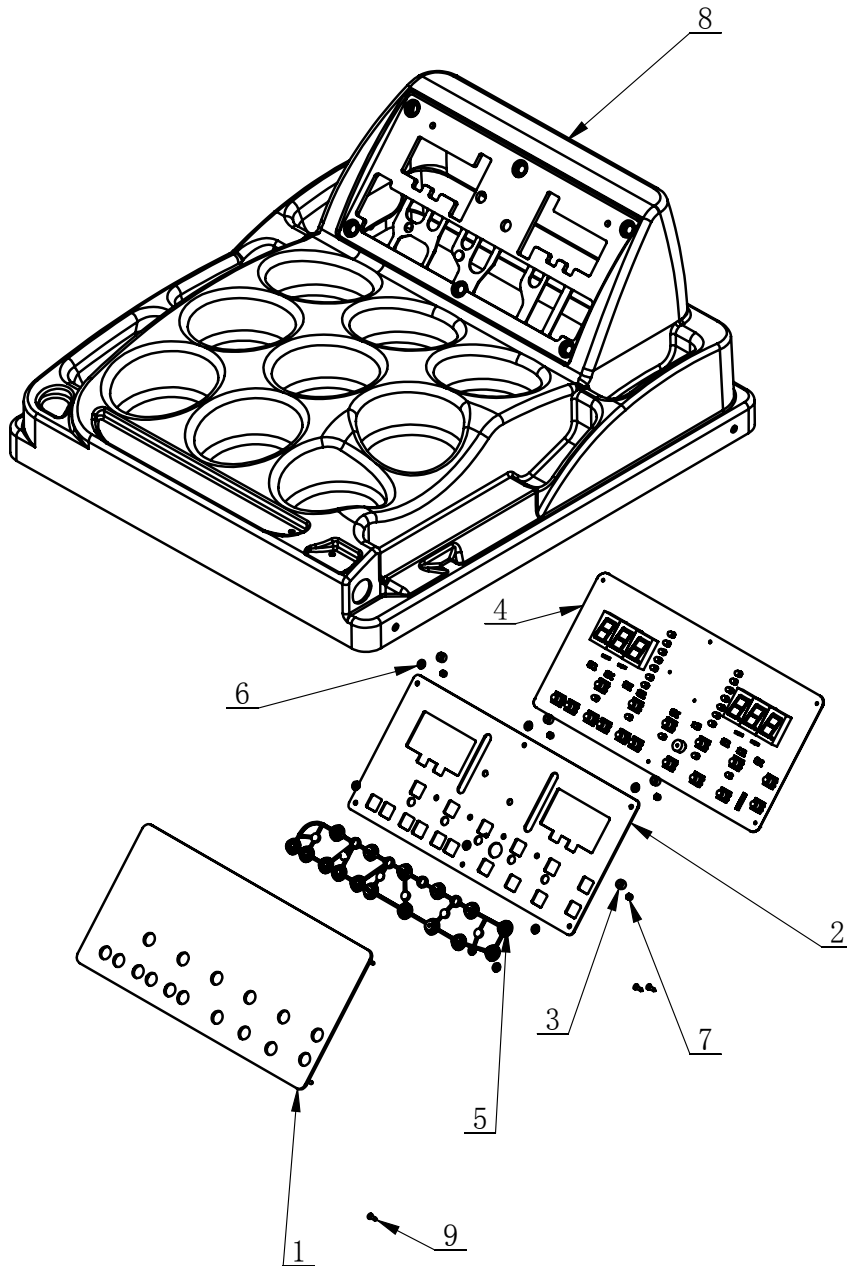
B-12-1000000



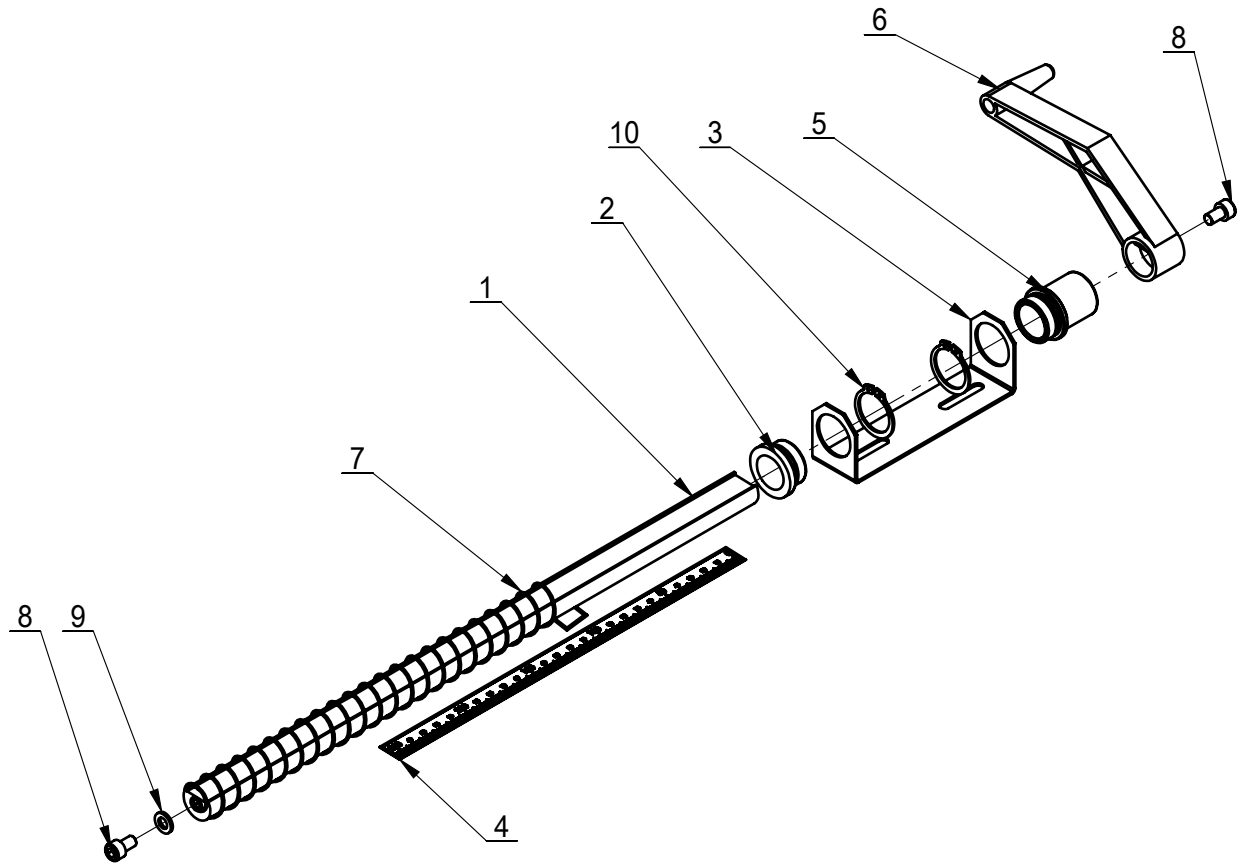
ITEM	PART.No	DESCRIPTION.	QT
1	B-12-1300000	910BODY	1
2	TB-F-0100000A	PROTECTIVE COVER ASSEMBLY	1
3	TB-P-0100000	BALANCER SPINDLE	1
4	TB-P-0110000	PRESS SENSOR ASSEMBLY	1
5	B-01-1000100	MOTOR HOLDER	1
6	GB5783-M8×20	HEXANGULAR BOLT	4
7	GB93-8	STANDARD SPRING WASHER	4
8	GB95-8	FLAT WASHER	4
9	TB-E-1000100	POWER CABLE ASSEMBLY	1
10	GB973-M5×8-H	CROSS PANHEAD SCREW	2
11	TB-S-0100009	CONE HANG HANDLE	2
12	GB5783-M10×25	HEXANGULAR BOLT	4
13	GB93-10	STANDARD SPRING WASHER	4
14	GB95-10	FLAT WASHER	4
15	B-01-1008001	SWITCH CONNECTION LINE	1
16	B-01-1008002	POWER BOARD CONNECTIONS	1
17	B-11-1000001	DISPLAY PANEL CABLE	1
18	B-11-1000002	DISPLAY PANEL CABLE	1
19	B-01-1008005	EARTH WIRE	1
20	B-01-1000006	WEDGE BELT(940mm)	1
21	GB70.1-M6×16	INNER HEXA CYLINDRICAL SCREW	4
22	GB93-6	STANDARD SPRING WASHER	5
23	GB95-6	FLAT WASHER	5
24	B-53-1000007	NUT M4	4
25	GB818-M6×12-H	CROSS PANHEAD SCREW	1
26	B-53-1000006	SCREW M4	4
27	C-71-1000019	RUBBER GROMMET	1
28	C-54-1000015	STOP-UP	1
29	B-53-1000008	FIX PLATE	4
30	B-53-1000009	NYLON BELT	5
31	B-01-1000010	COMPUTER BOARD	1
32	TB-E-1210000	POWER SUPPLY ASSEM	1
33	TB-E-9001220	MOTOR ASSEMBLY PART	1
34	B-12-1200000	LEAD WEIGHTS COVER ASSEMBLY	1
35	TB-E-1001101	POWER SWITCH	1
36	B-01-1008006	PHOTOCELL CONNECTION WIRE	1
37	B-01-1000008	ASSESS HOLES COVER	1
38	B-73-1000019	E-RINGS	1



ITEM	PART. No	DESCRIPTION.	QT. Y
1	B-12-1210000	LEAD WEIGHTS COVER THE MINISTRY OF INSTALLATION	1
2	TB-L-0101000	SCALE ASSEMBLY	1
3	GB973-M5×12-H	CROSS PANHEAD SCREW	2



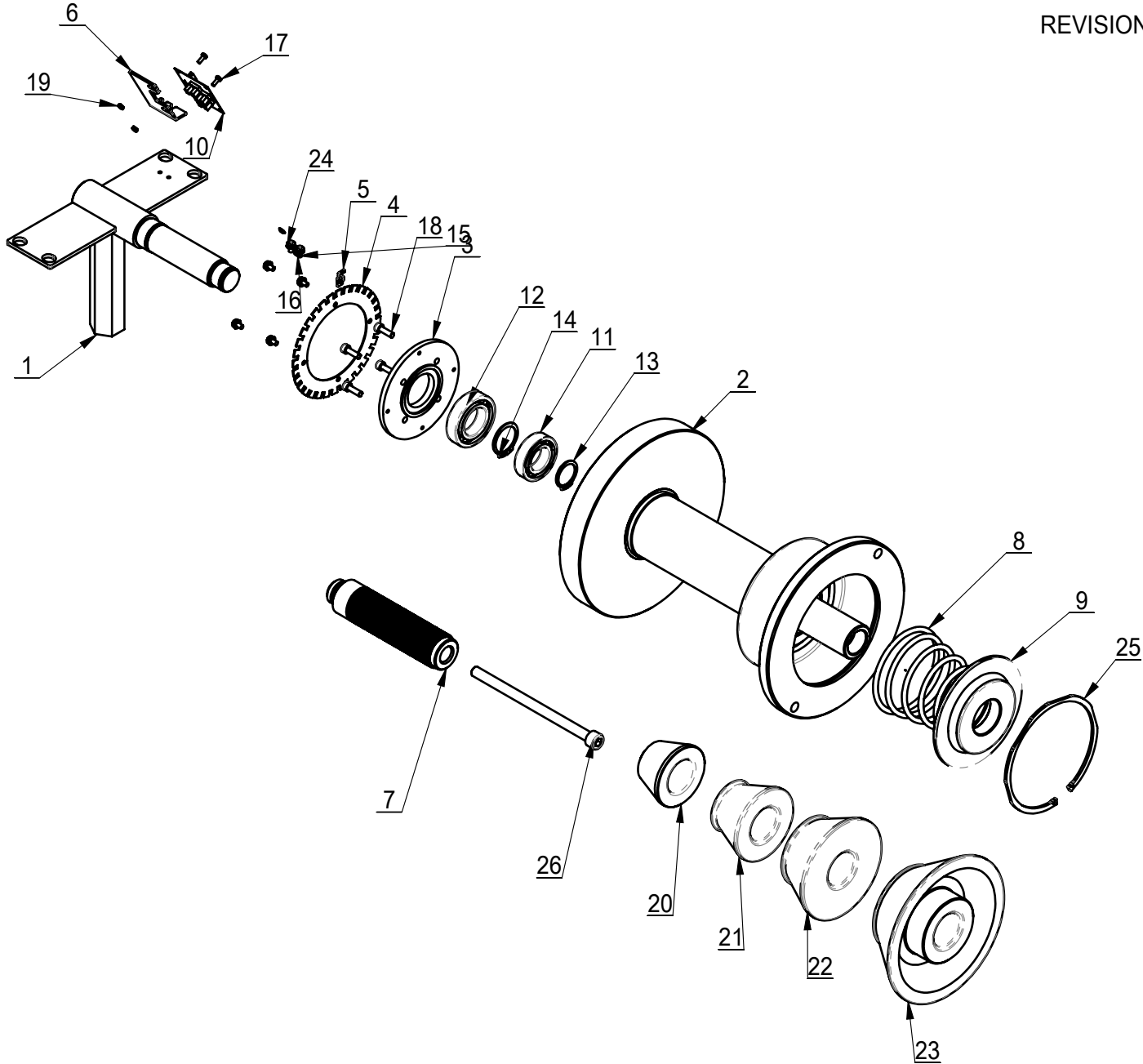
ITEM	PART. No	DESCRIPTION.	QT. Y
1	B-12-1210003	IMD PANEL	1
2	B-12-1210004	WASHER	1
3	B-56-1210008	SCREEN DAMP COVER	8
4	B-12-1210002	DISPLAY PANEL	1
5	B-12-1210006	BUTTEN	1
6	GB96. 1-3	LARGE WASHER A GRADE	8
7	GB889. 1-M3	1-TYPE PREVAILING TORQUE TYPE HEXAGON LOCK NUT	8
8	B-12-1210001	WEIGHT TRAY	1
9	GB845-ST2. 9×9. 5 H C	CROSS PANHEAD TAPPING SCREW	4



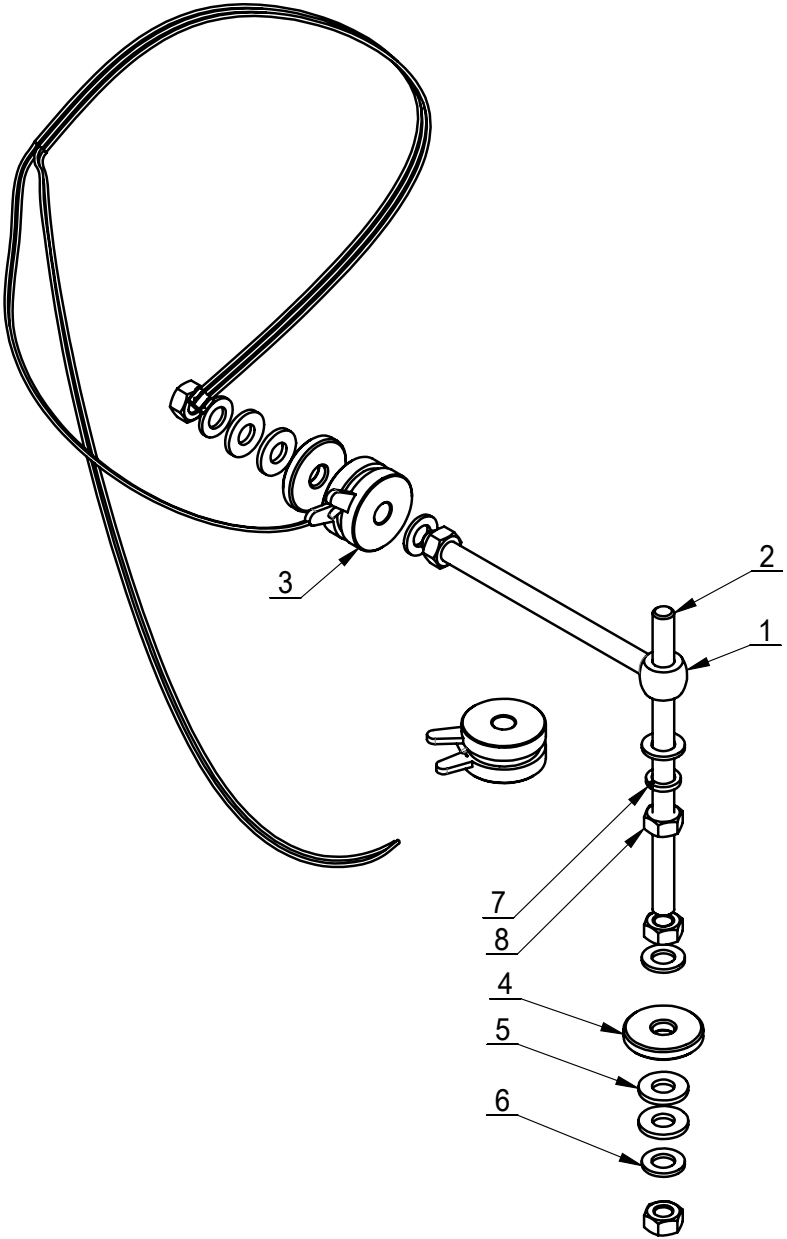
ITEM	PART.No	DESCRIPTION.	QT.Y
1	TB-L-0101001	SCALE ROD	1
2	TB-L-0101002	HARNESS	1
3	TB-L-0101003	SCALE HOLDER	1
4	TB-L-0101004	SCALE	1
5	TB-L-0101005	HARNESS	1
6	TB-L-0101006	SCALE HANDLE	1
7	TB-L-0101007	SPRING	1
8	GB70.1-M6×10	INNER HEXA CYLINDRICAL SCREW	2
9	GB95-6	FLAT WASHER	1
10	GB894.1-25	SHAFT ELATIC BIG RETAINING RING A-TYPE	2

REVISION 15A-01

TB-P-0100000

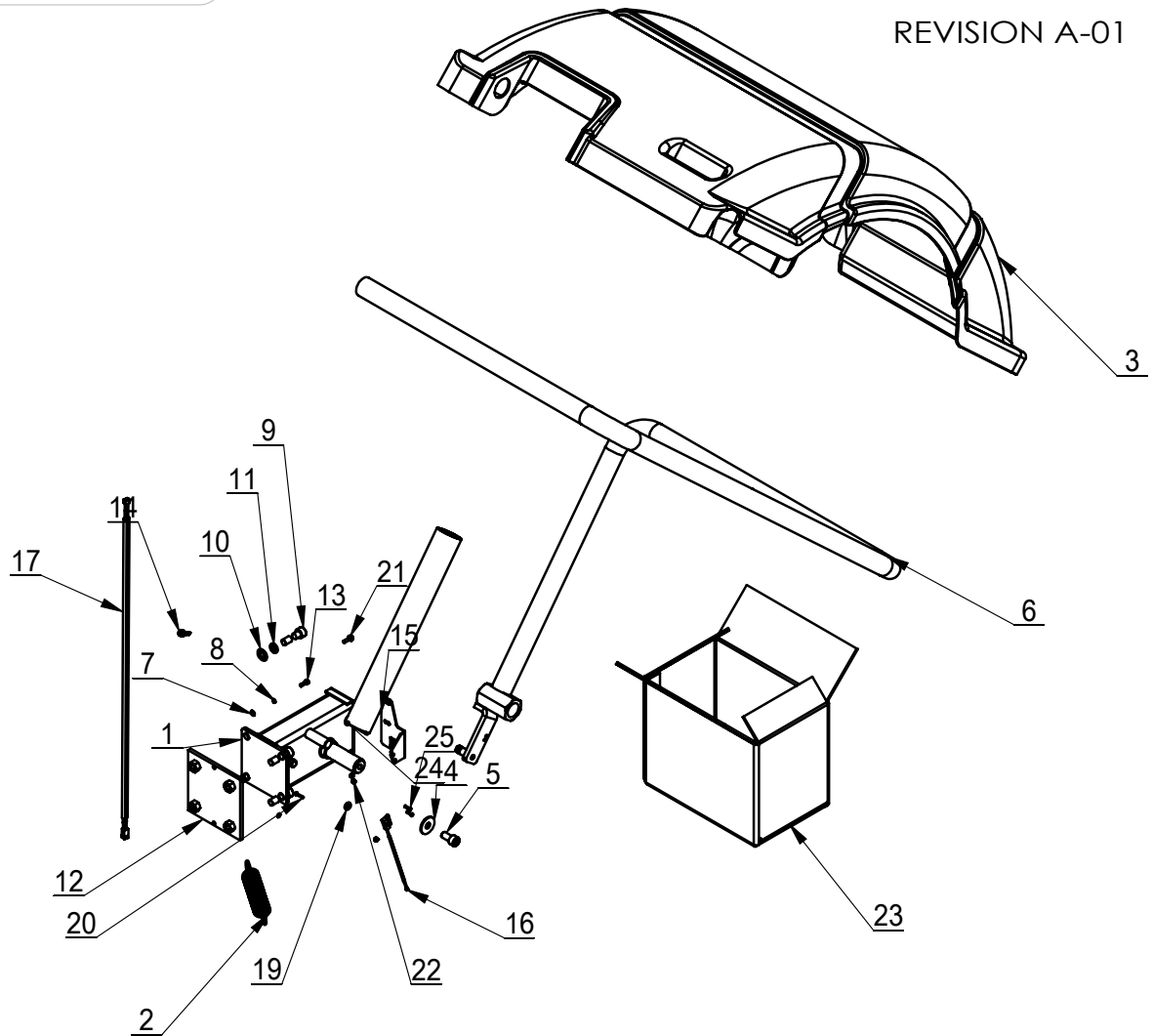


ITEM	PART. No	DESCRIPTION.	QT
1	TB-P-0101000	FIXING SHAFT WELDING	1
2	TB-P-0102000	MAIN SHAFT WELDING	1
3	TB-P-0100001	BEARING PRESS HOUSING	1
4	TB-P-0100002	PHOTOELECTRIC SET	1
5	TB-P-0100003	PHOTOELECTRIC TOOTH	1
6	TB-P-0100004	ENCODER CELL PLATE	1
7	TB-P-0100007	THREADED SHAFT 36MM	1
8	TB-P-0100009	SPRING	1
9	TB-P-0100010	SPRING PRESS PLATE	1
10	TB-P-0100011	ANGLE SENSOR	1
11	GB276-6005	DEEP GROOVE BALL BEARINGS	1
12	GB276-6006	DEEP GROOVE BALL BEARINGS	1
13	GB894. 2-25	SHAFT ELATIC RETAINING RING B-TYPE	1
14	GB894. 2-30	SHAFT ELATIC RETAINING RING B-TYPE	1
15	GB95-3	FLAT WASHER	2
16	GB93-3	STANDARD SPRING WASHER	2
17	GB818-M3×8-H	CROSS PANHEAD SCREW	2
18	GB70. 1-M5×16	INNER HEXA CYLINDRICAL SCREW	4
19	GB6170-M3	HEXANGULAR NUT 1-TYPE	2
20	TB-P-0100031	36CONE 42-65	1
21	TB-P-0100032	36CONE 54-78	1
22	TB-P-0100033	36CONE 74-108	1
23	TB-P-0100034	36CONE 89-158	1
24	GB9074. 4-M4×8	SCREW	6
25	TB-P-0300009A	CLAMP RING	1
26	GB70. 1-M10×160	INNER HEXA CYLINDRICAL SCREW	1

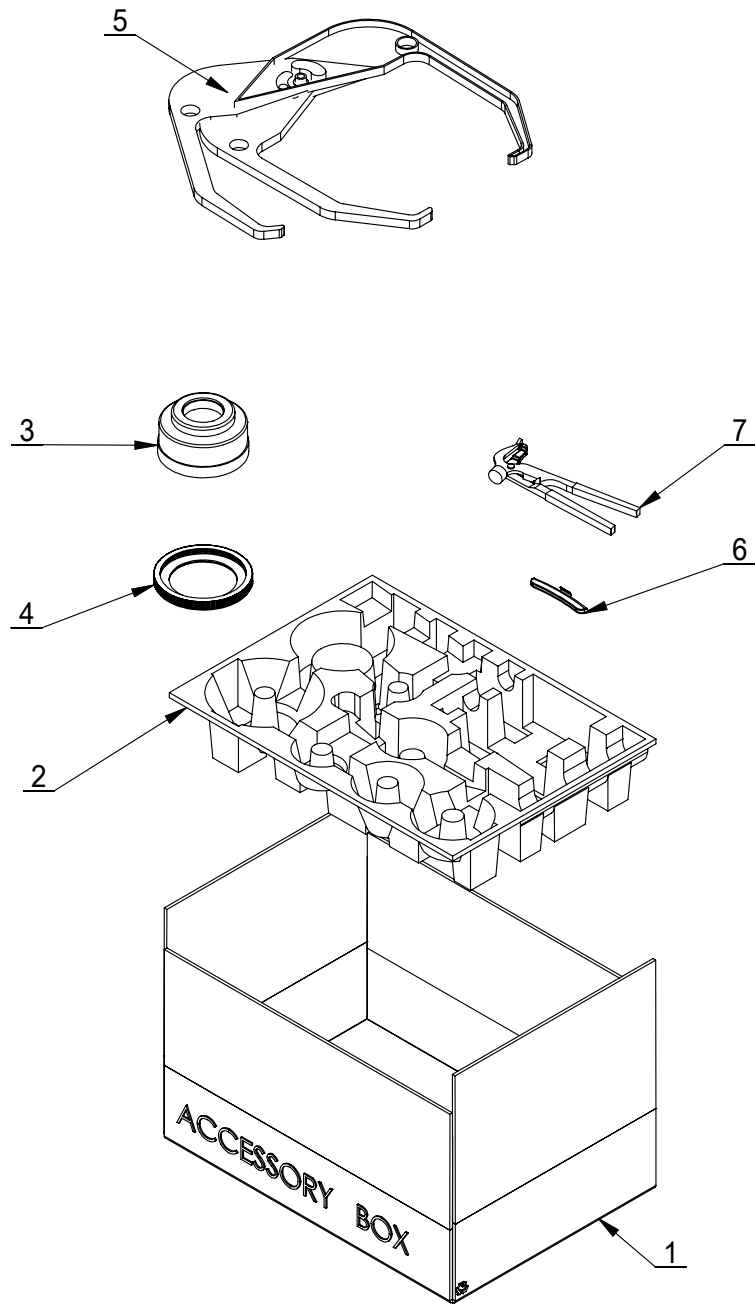


ITEM	PART.No	DESCRIPTION.	QT
1	TB-P-0103000	SCREW WITH HANGING RING	1
2	TB-P-0100006	FULL BOTTON SCREW	1
3	TB-P-0100100	PIEZO ASSEMBLY	1
4	TB-P-0100005	PRESSING WASHER	2
5	DIN 6796 - 10	SPRING PIEZO WAHSER	4
6	GB95-10	FLAT WASHER	5
7	GB93-10	STANDARD SPRING WASHER	1
8	GB6170-M10	HEXANGULAR NUT 1-TYPE	5





ITEM	PART.No	DESCRIPTION.	QT.Y
1	TB-F-0110000	PROTECTIVE HOOD SUPPORT	1
2	TB-F-0100001	SUPPORT PIPE EXTENSION SPRING	1
3	TB-F-0100003	NEW STYLE HOOD	1
4	GB96.1-10	LARGE WASHER A GRADE	1
5	GB70.1-M10×20	INNER HEXA CYLINDRICAL SCREW	1
6	TB-F-0120000A	PROTECTIVE HOOD SUPPORTT	1
7	GB95-4	FLAT WASHER	2
8	GB93-4	STANDARD SPRING WASHER	2
9	GB70.1-M10×35	INNER HEXA CYLINDRICAL SCREW	4
10	GB95-10	FLAT WASHER	4
11	GB93-10	STANDARD SPRING WASHER	4
12	TB-F-0130000	CONNECTING PLATE	1
13	GB70.1-M4×12	INNER HEXA CYLINDRICAL SCREW	2
14	GB15856.4-ST5.5×19	HEXA FLANGE TAPPING SCREW	1
15	TB-F-0100007	PROTECTIVE PLATE	1
16	B-53-1000010	MAGNETIC SWITCH	1
17	B-53-1000016	POWER LINE	1
18	GB95-3	FLAT WASHER	1
19	TB-F-0100016	MAGNET	1
20	GB819.1-M3×16-H	CROSS COUNTERSUNK SCREW STEEL 4.8 GRADE	1
21	GB9074.4-M4×16	COMBINATION SCREW	2
22	GB889.1-M3	1-TYPE PREVAILING TORQUE TYPE HEXAGON LOCK NUT	3
23	TB-S-0100004	ACCESSORY BOX	1
24	TB-F-0100014	PROTECTIVE CASING	1
25	GB819.1-M3×12-H	CROSS COUNTERSUNK SCREW STEEL 4.8 GRADE	2



ITEM	PART.No	DESCRIPTION.	QT
1	TB-S-0100006	ACCESSORY BOX	1
2	TB-S-0100007	TRAY	1
3	TB-S-0100001	BOWL	1
4	TB-S-0100002	BOWL EDGE	1
5	TB-S-0100100	CALIPER ASSEMBLY	1
6	TB-S-0100003	WEIGHT(100g)	1
7	TB-S-0100005	BALANCE HAMMAR	1